

« BOLA » PENDANT TUTORIAL ©

Made by Puca

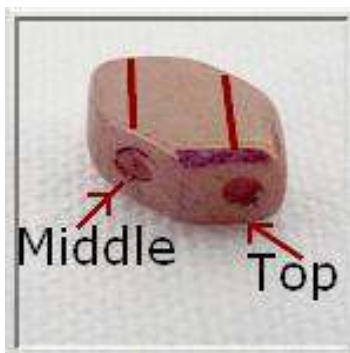




Materials:

- 32 Paros® par Puca®
- 24 faceted beads 3 mm (F3)
- 12 bicones 3 mm (B3)
- seed beads 15/0 (SB15)
- 1 round bead 18 mm (RB18)
- FireLine 0,12

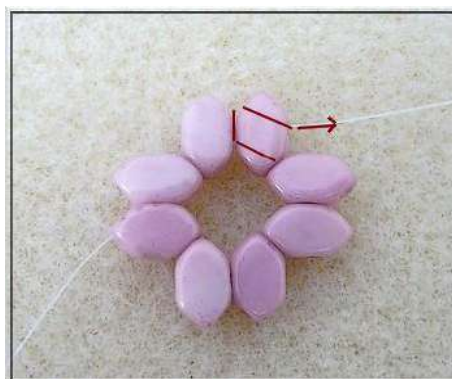
Before starting, I want to present you the new bead
"Paros® par Puca®"
 with 2 holes: 1 at the center and 1 at the top, diagonally



1) Pick up 8 Paros® (middle to the top).



2) Pass again through the first Paros® in order to make a square. Tie a knot and hide it into the Paros®.



3) Pass through the same Paros® (the second hole).



4) Add 1 SB15, 1 B3, 1 Sb15 entre les Paros®.



5) Add 1 F3 between the corners.



6) Repeat steps 4 and 5 and exit through B3.



7) Add 1 SB15, 1 Paros® (middle) and go back to the second hole of the same Paros®.



8) Add 7 Paros®.



9) Pass through the first Paros® to make a new square.



10) Go through the next Paros® (top to middle).



11) Pass through the same Paros® (the second hole).



12) Add 1 SB15 and pass through the B3, SB15 and Paros® (middle to top).



13) Repeat steps from 4 to 6 and exit through the B3 (red arrow).



14) Repeat steps from 8 to 13.



15) Make a total of 4 squares (don't cut the thread yet).



16) Pass through the Paros® (red arrow). We are preparing to close the cube.



17) Add 1 SB15 end pass through the B3.



18) Add 1 SB15 end pass through the Paros® (middle to top) to close.



19) Add 1 SB15 end pass through the Paros® (middle – red arrow).



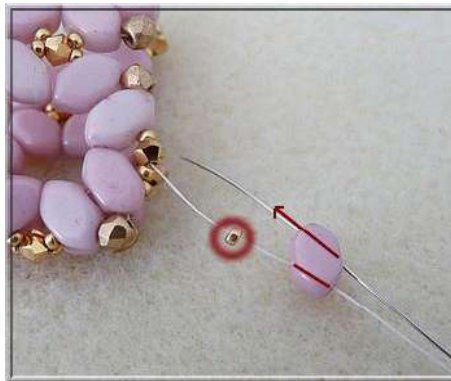
20) We will have this.



21) Add the F3 and B3.



22) Exit through the B3.



23) Pick up 1 SB15 and 1 Paros® (middle to top). Pass again through to the same Paros® (second hole) and repeat steps from 7 to 12.



24) Close only with the B3.



25) Close also the 3 F3.



26) Add 1 SB15 between the F3 and pull the thread. Do same thing to all 4 corners.



27) You will have this.



28) Pass through the B3 and add the RB18.



29) Repeat steps from 7 to 12. Close all T3 and the corners (like in step 26). The « Bola » pendant is finished.



30) Your pendant measures 2 cm. You can insert a chain in the pendant.



31) You can also add 1 SB15,
1 SB8 end 1 SB15 on the F3.
Place a jumpring in the SB and
add the chain.

Happy beading!
Thank you for respecting my work.©
Puca - May 5, 2018

